

GOALKEEPERS

Landmarks in India's SDG Journey



Annual Report 2021-22

ANNUAL REPORT

21
22



CONTENTS

01 FROM THE SECRETARY'S DESK	01
02 VISION & MISSION	03
03 ORGANOGRAM	04
04 SDG GOALS	05
05 HEALTH	06
06 LIVELIHOOD & NATURAL RESOURCE MANAGEMENT	10
07 TECHNO MANAGERIAL SUPPORT	22
08 ADVOCACY AND POLICY	23
09 TIE UPS AND EMPANELMENT	25
10 AWARDS AND RECOGNITION	25
11 FINANCIALS	26

The Coverage



From the Secretary's Desk



Ganesh Reddy

Secretary cum CEO

“ We seek continued support from all our well-wishers in our journey of making people self-reliant.

01

It gives me immense pleasure to present the Annual Report of Citizens Foundation for the FY 2021-22. This is an opportunity to present and acknowledge the labor of the team. This year the organization bounced back to its endeavor after the restrictions of Covid-19 and is enthusiastic towards new commitments.

Previous year Citizens Foundation continued with its deliverables in the various programs despite the intimidation of Covid-19. The organization worked from the front line providing non-stop services to the patients through the CHCs at Meghalaya, two Kalyan Hospitals in Sahebganj and Chaibasa, Mobile Medical Units in 12 districts, Mobile health Clinic under NTPC and AROGYA Project under Vedanta in Covid-19. We also ensured efficient roll out of Covid-19 vaccinations through these health centres.

In Natural Resource Management and Livelihood sector, Citizens Foundation signed an MoU to establish Agridlinics in Madhupur & Chas in Deoghar and Bokaro districts respectively to provide all kinds of information, help and technical assistance to the farmers to enhance their productivity for better income. At the same time team Citizens Foundation continued with the HDFC Bank's HRDP Parivartan Project in Assam and Sikkim for 3rd and 2nd year consecutively. The organization did commendable work in Covid response by advocating social distancing and providing on call doctor services. Despite the challenges faced in Covid, the organization unflinchingly and diligently delivered the services for the Holistic Rural Development Program. Similarly CF worked for projects under Integrated Watershed Management in Gumla and Latehar and NABARD RIDF project in Gumla to become a sustainable means of support for agriculture in the arid areas of Jharkhand.

Citizens Foundation acknowledges the valuable support of all the partners which steered the organization in its endeavors. CF is also grateful to all the staff across various locations who have worked tirelessly in achieving the definite goals of the organization.

Legal Status

N

NGO: Registration No

00285/267/01-02 dated 20th February 2002,
Regd. under the Societies Registration Act.1860

I

ISO 9001:2015 Certification

Certification No.: IAS/QMS/C1787

12

12A

Registration No. AAATC5200EE2021401,
Registered under 12 A of Income Tax Act

P

PAN

AAATC5200E

80

80 G

Registration No. AAATC5200EF2021401,
Registered under 80 G of Income Tax Act

T

TAN

Tax Deduction A/c No.-RCHC00676E dated
24th February 2007

C

CSR Form 1

Registration No. CSR00000589

E

ESIC

Code No. 60001548910001019

F

FCRA

Registration No. 337800156 (social) in 2006,
Registered under FCR Act, 1976

G

GSTIN

20AAATC5200E1ZR

U

UDYAM

Registration No. UDYAM-JH-20-0014907

P

PF No.

JHRAN0031465000

N

NGO Darpan Unique Id

JH/2009/000156

Governing Body



Renu Bhagwati

PRESIDENT



Rajendra Kumar

VICE PRESIDENT



Ganesh Reddy

SECRETARY



DL Mishra

JOINT SECRETARY



C Jayshree

TREASURER



Vijay Kumar

MEMBER



Ujjwal Kumar

MEMBER



Vision

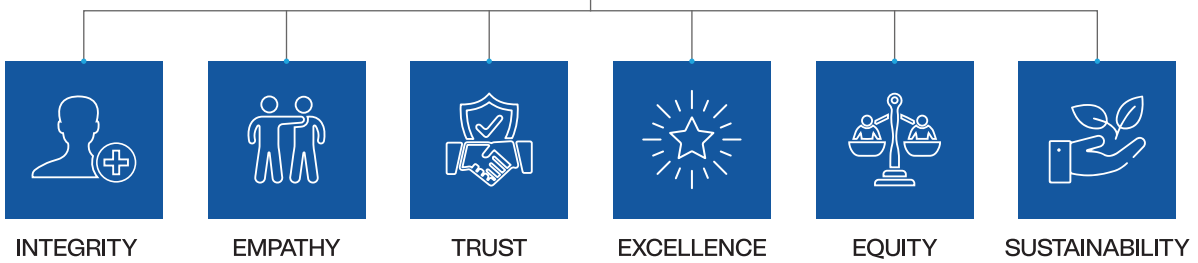
Making People Self Reliant

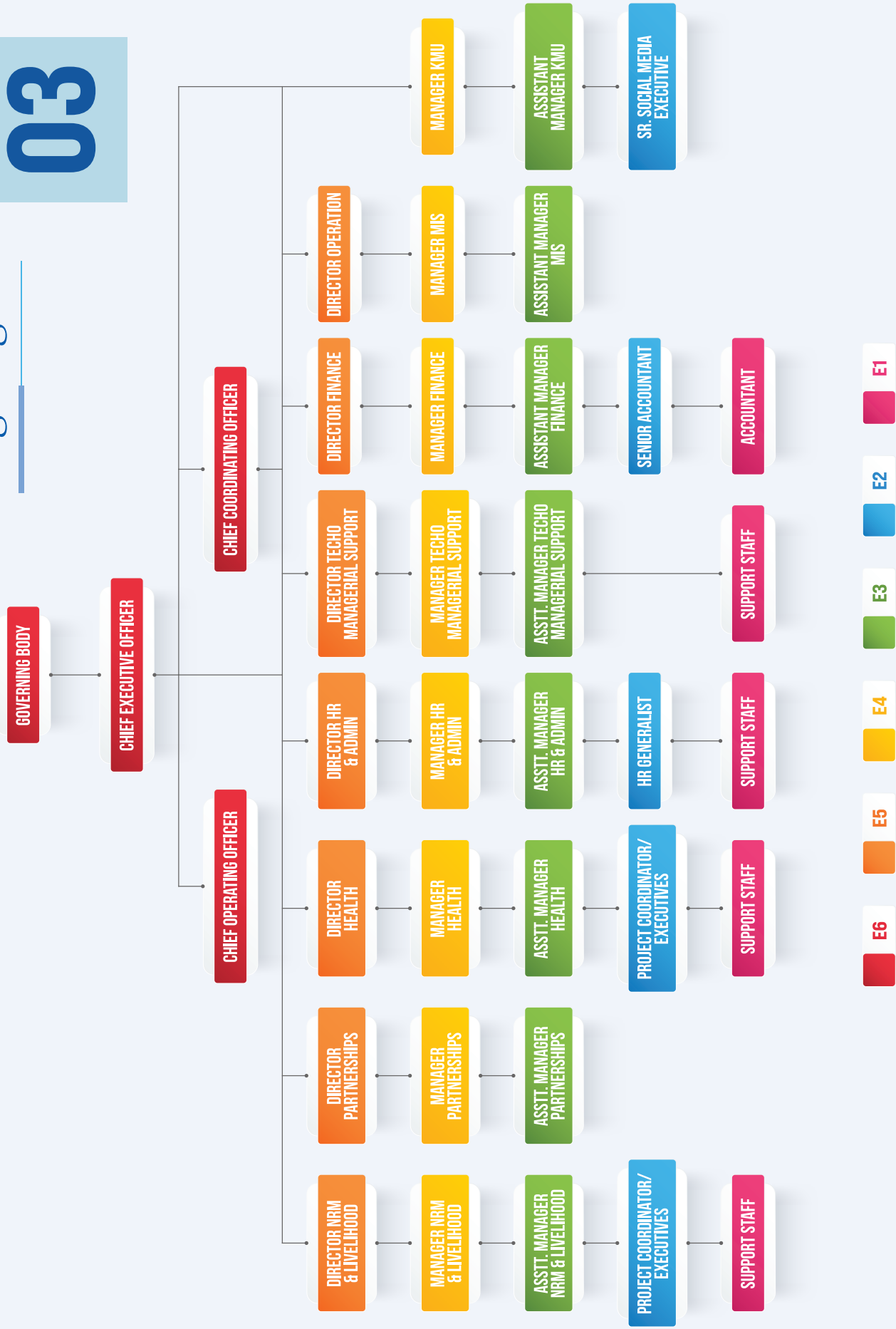


Promoting Self Reliance through Sustainable Actions

Mission

Core Values





- E6
- E5
- E4
- E3
- E2
- E1

Committed Towards

SUSTAINABLE DEVELOPMENT GOALS

04

As a signatory of the 17 Sustainable Development Goals set by the United Nations to attain the dream of a completely sustainable society by 2030, Citizens Foundation is committed to ensuring the introduction and implementation of sustainable approach to everyday problems and their solutions. Our current projects, and ongoing areas of work, focus on the 17 SDGs, which are:

Goal 1:

End Poverty in all its forms everywhere

Goal 2:

End hunger, achieve food security and improved nutrition and promote sustainable agriculture

Goal 3:

Ensure healthy lives and promote well-being for all at all ages

Goal 4:

Ensure inclusive and quality education for all and promote lifelong learning

Goal 5:

Achieve gender equality and empower all women and girls

Goal 6:

Ensure access to water and sanitation for all

Goal 7:

Ensure access to affordable, reliable, sustainable and modern energy for all

Goal 8:

Promote inclusive and sustainable economic growth, employment and decent work for all

Goal 9:

Build resilient infrastructure, promote sustainable industrialization & foster innovation

Goal 10:

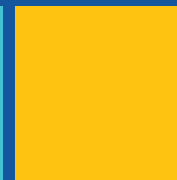
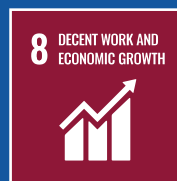
Reduce inequality within and among countries

Goal 11:

Make cities inclusive, safe, resilient and sustainable

Goal 12:

Ensure sustainable consumption and production patterns



Goal 13:

Take urgent action to combat climate change and its impacts

Goal 14:

Conserve and sustainably use the oceans, seas and marine resources

Goal 15:

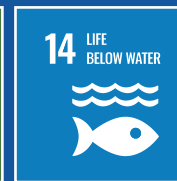
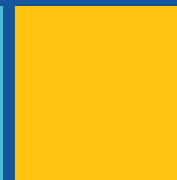
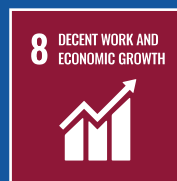
Sustainably manage forests, combat desertification, halt and reverse land degradation, halt biodiversity loss

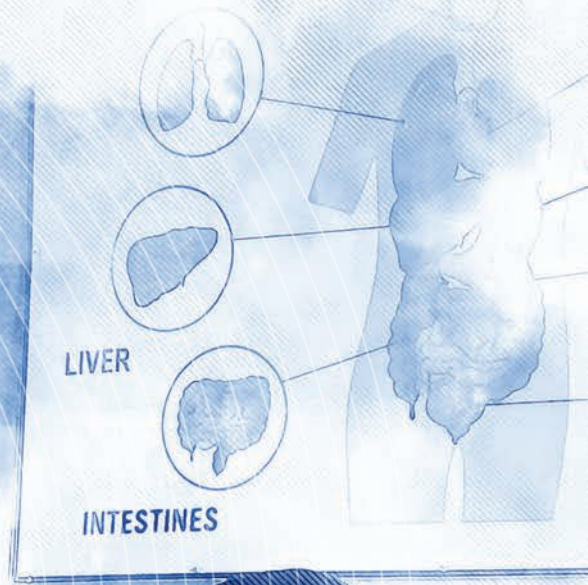
Goal 16:

Promote just, peaceful and inclusive societies

Goal 17:

Revitalize the global partnership for sustainable development





Health

05

Citizens Foundation as a commitment to achieving the SDGs has a robust experience of delivering health services to the remotest and vulnerable areas of Bihar, Jharkhand, Meghalaya, Assam and Sikkim. From the general hospitals to the travelling medical vans (through MMUs and MHCs), to dedicated healthcare of malnourished children and even conducting mega health camps, Citizens Foundation is working on more than 40 healthcare projects with a team of dedicated health workers, taking healthcare to every single person and to specially those who need it the most. With over 20 years of experience in rural healthcare, Citizens Foundation strives to use its expertise to support programs that contribute to the overall wellbeing of people.



Mobile Medical Unit

(Partnered by Department of health and Family Welfare, Government of Jharkhand)



Citizens Foundation has been striving to outreach with healthcare services for the past 11 years to the remote pockets of 12 districts in through Mobile Medical Units (MMUs). This is a boon for the vulnerable communities in areas with limited CHCs and PHCs and who lack resources to access healthcare at critical times. The services provided through MMUs covers the following aspects for fundamental right to health:

Promotional:

To raise awareness and carry best hygienic practices in the health sector that encourage community participation.

Preventative:

“Prevention is better than cure.” Accurate diagnosis of health at MMUs prevents from risk of fatal diseases.

Curative:

Provision of first aid, treatment of minor ailments and early detection of communicable diseases ensures fast recovery.

Family Planning:

Educates and provides support to parents in planning and executing the number of children and time span between childbirths for the good health of mother and baby.

Reproductive and Child Health:

Healthy mothers build healthy families. MMUs provide ante natal and post natal care for healthy mother and child.

Community Health Center

(Partnered by Department of Health and Family Welfare and Government of Meghalaya in conjunction with National Health Mission)



Citizens Foundation operates and manages 2 Community Health Centres (CHCs) in Ichamati, located in the Shella Bholaganj Block of the East Khasi Hills District and Nongkhlaw CHC in the Mairang Block of West Khasi Hill District which plays an important role in providing regular in-patient and out-patient health care services, implementation of family welfare programme and national health programmes, prevention and control of endemic diseases, basic sanitation, immunization, etc. Both centers have 30 beds each and provide comprehensive services to approximately 12,000 beneficiaries each by being in operation 24 hours a day, 7 days a week, 365 days of a year. This partnership between the NRHM, Government of Meghalaya and Citizens Foundation began in 2008. Over the past 13 years, the beneficiary attendance under our management has steadily increased every year.



Kalyan Hospital

(Partnered by Tribal Welfare Commissioner (TWC), Department of Welfare, Jharkhand)

Citizens Foundation associated with TWC to provide free of cost quality healthcare to the underprivileged, especially tribal population through two tribal welfare MESO Hospitals in Sahibganj and Chaibasa districts of Jharkhand. The project aimed at developing TWC as First Referral Unit (FRU) and



bringing in private sector efficiency for quality healthcare services delivery. While the Sahibganj unit has been functioning as a full-fledged Kalyan hospital since December 2018, the Chaibasa Kalyan Hospital runs as an OPD for six days a week.



Mobile Health Clinic

(Partnered by National Thermal Power Corporation (NTPC))

MMU covers remote and rural areas at Tandwa block of Chatra district to provide clinical care services where there are no facilities for primary health care within a half an hour walking distance to vulnerable population i.e. SC/ ST/ Minorities/ homeless/ Migrants with support of community, SHG and PRI members. It is equipped with a trained set of Health Professionals that includes Doctor, Nurse, Pharmacist, Lab. Technician and provides free of cost OPDs with facilities of basic & listed drugs and diagnostic services to poor and marginalized people. The OPD/Clinical Care services that covers out-reach services also provide services for Eye Care, TB, HIV and vector borne disease for the rural patients. It has a strong referral network with nearby health facilities/PHC/CHC or secondary level health facilities if required.



Project AAROGYA

(Partnered by ESL Vedanta)

Citizens Foundation joined hands with  **vedanta**
transforming elements

ESL Vedanta to improve health services of the rural poor through Integrated Interventions and Resource Centre in Chas and Chandankiyari blocks of Bokaro. The project aims to illuminate health issues through management of health clinics and establish better convergence among concerned departments and key stakeholders. Empower the health facilities for screening of the diseases among community and resolving health issues through introduction of Medical Mobile Units for effectiveness of Health care Society. It sensitizes the community on common preventable health problems and improve the capabilities at all levels of the society to assess and analyze problem and to design appropriate action through genuine community involvement.



HEALTH OUTREACH IN FIGURES

MMU's

MMU	IPD	Tests	Household	Population
Jamtara Old	16037	2913	18163	157967
Jamtara New	14858	4028	18194	157963
Dumka	11607	1874	1751	15862
Godda	12479	2521	7531	37517
Deoghar	14631	2119	18263	157984
Dhanbad	7200	831	-	29898
Giridih	7656	322	-	-
Jamshedpur	9037	763	18102	108006
Palamu	10159	630	5375	59428
Total	103664	16001	87379	724625

CHC Meghalaya

Name of the project	No. of patients OPD	No. of patients IPD	No. of X-Ray	No. of Lab Test	No. of Institutional Deliveries	No. of surgery	No. of population covered	No. of Covid vaccination
Ichamati								
Nongkchlow								

Tribal Welfare Hospitals

Name of the project	Total No. of OPD
Barachiru	10849
Pathna	34363

Project AAROGYA - ESL Vedanta

IPD	Tests	Household	Population
17253	1535	10736	55727



Citizens Foundation
Making People Self Reliant



Livelihood & Natural Resource Management

06

Livelihood Management

Citizens Foundation engages extensively for enhancement of livelihood to reduce poverty and inequality by generating employment among poor households and by moving highly vulnerable households into sustainable livelihoods and toward economic stability. The organization has worked for diverse communities in Jharkhand, Assam with varied culture, resources and geography with respect to the five among other targets of the Sustainable Development Goals (SDGs). The target Goals are No Poverty, Zero Hunger, Gender Equality, Reducing Inequality and Life Below Water.

HDFC PARIVARTAN

The HDFC Bank partnered with team Citizens Foundation in the month of April 2019 with the objective of holistic development of ten villages in Assam.



HRDP ASSAM

The objective of this project was to accelerate socioeconomic growth for at least 1100 underprivileged families within a year in 10 villages in Assam's Kamrup (Rural) district. It also aimed to strengthen community action for kicking off sustainable development. Ten villages in the Kamrup (Rural) district's Hajo and Rangia development block were to get the project's projected implementation. These are located in the same district but under two separate panchayats. These communities were all selected by considering their socioeconomic condition, location, connectivity, and population. These communities, which are dispersed throughout the district in various directions, reflect vulnerable areas there. The settlements all have the traits of being close to wetland areas and being vulnerable to flooding.

FISHING BOATS: A NEW RAY OF HOPE

The outbreak of COVID-19 pandemic and the resultant total lockdown in India have greatly affected the livelihoods of fishing communities across India. Many fishing families have expressed the loss of their income during lockdown period. In order to protect the livelihood security of fishing communities, an immediate help to boost up of HHs economy we are taken initiative of distribution of 20 boats to fisherman HHs. Holistic Rural Development Program had enormous impacts on marginal farmers- Who are lacking of proper tool, machinery, financially, technically and knowledge support.





KITCHEN GARDEN

Intervention:

A key intervention through the Holistic Rural Development Program (Parivartan) supported by HDFC Banks, is initiative for distribution of seeds and helping create kitchen gardens near hand-pumps or where families are disposing of waste water or in the backyard of the Kitchens. Kitchen gardens small plots of land where families can grow a variety of fruits and vegetables. These kitchen

gardens are meant to increase food diversity in the diets of the participating families and reduce reliance on the market for fruits and vegetables.

Citizens Foundation with the support from HDFC banks Parivartan project, trained and supported the beneficiaries in the 10 Project villages in Rangiya and Hajo Block of Kamrup rural district of Assam. The Field mobilisers together with the staff were also sensitized on the importance of kitchen garden before they worked with the beneficiaries.

According to one of the beneficiaries Rani, *"Kitchen gardening is the easiest way of growing desirable fruits and vegetables on our own piece of land, it gives direct access to diverse nutritionally rich vegetables"*

Outcome:

The kitchen garden has been impactful for Rani's family. The initial batch of seeds has grown into a beautiful, diverse garden which includes cabbage, cauliflower, KnolKhol, chilly, Pumpkin, Coriander, Beans, green leafy vegetables, Brinjal, Radish.

Rani's also proudly exclaims that *"Because of my kitchen garden, we have vegetables in our own backyard and this provides me with nutrition as it is organic, also I save money which was to be spent on vegetables every week on the market"*

HORTICULTURE PLOT

Intervention:

Citizens Foundation in support with HDFC Banks Parivartan trained Farmers like Pradip Kalita on "Horticulture Cultivation", the farmer also familiarized with technologies for improving Soil health condition, foliar nutrition and Plant protection aspects. The farmers were also trained for making organic manure like vermi-compost and participated in the Integrated Pest Management training. The farmers used the crops highly in demand in the nearby market for the Horticulture plot.



Outcome:

Mr. Pradip Kalita with support from HDFC Parivartan and Citizens Foundation implemented the scientific practices and other farmers started suit to adopt these practices with the expectations of achieving higher yield and income. He has earned around Rs. 30000/yr. He also states that "In near future more farmers will be encouraged to cultivate 0.5 acre horticulture plot for better agriculture outcomes and sustainability". Presently The 0.5 Acre land of Pradip Kalita is a model for farmers in the village of Sauramuri, under Kamrup Rural Assam.



OILSEED

Oilseed-Mustard is one of the major components under HRDP project. It has brought happiness in 30 farmers HHs with getting support from HDFC Bank, where they have supported seed, manure, ploughing and fencing. The farmers have collectively cultivated in 53 acres of land under Hajo Development block, which resulted in higher return in comparison with any previous year. The activity was executed under Udayan Ketto Vitti (Cluster Committee) which made the marketing easy for the product locally. The group has collectively produced 160 quintals of mustard seed across the village which is very encouraging for the farmers as first step towards sustainable agriculture products.



SOLAR IRRIGATION

Intervention:

Solar irrigation is a revolutionary system for agriculture in Assam. This doesn't require any fossil fuel or electricity that is why it is one of the most cost efficient irrigation facilities, it just needs some solar panels which collect the solar power and convert into electricity which run a submersible pump for pulling out underground water. In HRDP funded by HDFC Bank's Parivartan established 6 nos. of solar powered irrigation system has been



established in Hajo and Rangia block. Groups of farmers are running it to irrigate their land and collect a nominal amount of money from the water users for further maintenance of the system.

Outcome:

Total 160 farmers are getting irrigation facility with zero expenses. Now they can use their farmland in all seasons. Earlier before the intervention they were unable to do rabi crops and oilseed due to shortage of water in the season. They have now doubled their income through farming throughout the season. The cost of farming has also reduced due to less consumption of fuel or any other electrical power. It can irrigate almost 105 acres of land throughout the season. Lack of water and dependency on rain is no more a key issue for the cultivation in any season.

EDUCATION

Renovation of School:

Rural Education and adequate infrastructure is on the top of the Government of India's priority list. In order to ensure greater participation of adolescence girls and boys in elementary education, Citizens Foundation in collaboration with HDFC Bank Parivartan has targeted for renovation of schools that can be easily accessed by the girls, separate toilets for girls, smart class, library, running water facility, mural painting and learning materials to accessibility of quality education. So far under HRDP project 2 nos. Schools and 5 nos. Anganwadi centre were renovated with basic amenities.



Observations and impact:

1. The school has sufficient teaching staff and provides a quality education to the students.
2. The school, after getting support from HDFC Bank has sufficient furniture, books and shelves.
3. Easily connect and advance learning opportunity with outside world through internet and smart class.
4. The developing the required infrastructure and facilities for the school is going to have far reaching impact on spreading the quality education amongst the students studying in the rural areas Schools.

Renovation of Anganwadi (Pre-school):

Citizens Foundation in collaboration with HDFC Bank PARIVARTAN decided to renovate 5 nos. of Anganwadi Centres in Rangia and Hajo development block for improvement of quality education through infrastructure development, roof sheet change, Hygiene toilet, Safe drinking water, Floor, cushion for comfort sitting, ceiling for reduce heat, Mural painting for visual learning, fencing for protection of children's and TLM for easy learning process more interesting.

Through this intervention there will be expectation there has been an increase in enrolment of children after the pandemic scenario. More than 150 children will be benefit from this ICDS centres. Rather than this the children were getting safety and joyful learning through TLM, and also accessible and approachable vicinity for women who are accessing to the ICDS.



The project aims to accelerate socio economic growth of at least 1100 marginalized families, covering 4499 people across villages to enhance community action for initiating sustainable development process, and thereby create peaceful, prosperous and egalitarian society in 10 villages under Pakyong, East Sikkim district of Sikkim within one year.

The Project was proposed to be Implemented in 10 villages, the details of which is mentioned below along with the Target beneficiaries. The Project was proposed to be implemented in ten villages under Pakyong Sub District of East Sikkim District of Sikkim. These are under two different GPUs of the same district namely Amba GPU and Thekabong Parkha GPU. All these villages were randomly selected, considering population, location, connectivity and socio-economic status. The villages are scattered in different directions of the district, representing different vulnerable areas of the district.

CONDUCTING HEALTH CAMPS

Intervention:

To Conduct Health Camps in the Project Villages.

Outcome:

Conducted Annual Health Camps benefitting 860 beneficiaries at GPU Level by Health & family Welfare Department, Govt. of Sikkim, along with COVID response activities as per demand and convenience of Community.



Impact:

Along with Physical Health checkup and COVID tests, people got mental health counselling as well which was an inevitable benefit for the community in the crisis of pandemic.



VALUE ADDITION IN ANGANWADI CENTERS

Intervention:

To upgrade the infrastructure and interiors of Anganwadi ICDS and make it child friendly.

Outcome:

Upgraded 6 Anganwadis in Project villages in civil work (repaired toilets, kitchen doors, water tanks, etc.), and renovation of interiors making it child friendly.

Impact:

Not only children but pregnant and lactating women got benefit of the renovation facilities.



UPGRADATION OF GOVERNMENT HIGH SCHOOLS & SETTING UP SMART CLASSES

Task:

To upgrade the infrastructure and interiors of Government Schools (Higher Grade) and setting up well equipped smart classes in the school.

Outcome:

Upgraded the infrastructure and set up well equipped smart classes in 2 schools mentioned below:

- ✓ Sanskrit Paathshala, Lapthang Village
- ✓ Govt. School, Takshang Kaizaley

Impact:

Introducing the children from the advanced interface of Education to update them with modern ways of learning along with renovated and facilitating infrastructure.

Natural Resource Management

In its commitment towards SDGs Citizens Foundation implements projects aimed at conservation of the natural resources. It develops strategies to incorporate technologies to protect and preserve the flora and fauna to maintain the balance in the ecosystem through various programs under NABARD, JTELP, IWMP etc. These programs primarily focus on watershed management, water conservation infrastructure, integrated soilwater-nutrient management, climate justice agriculture, and waste management.

NABARD RIDF

In joint association with National Bank for Agriculture and Rural Development (NABARD) under the NABARD-RIDF (Rural Infrastructure Development Fund) programme, Citizens Foundation has taken up the project of watershed management in ten villages of Gumla and Raidih blocks of Gumla district. Under this programme we are facilitating the increasing agricultural production and productivity, capacity building, rural livelihoods, etc.



CASE STUDY

Construction of Pond under Watershed Project supported by NABARD RIDF

“Construction of pond brings a new lease of life.”

Balram Oraon is a resident of village Vrinda Navatoli of panchayat Vrinda under block Gumla in Gumla District. Due to lack of irrigation, despite having cultivable land in his village, only paddy could be cultivated in his land. In the rest of the year, the fields remained fallow rendering them vulnerable to financial crisis. In the current times he has become self-sufficient, due to the tireless efforts of Citizens Foundation who introduced him to the advantage of advanced schemes.

In order to address the issue of lack of irrigation a 100*100*10 pond was constructed on his land by Citizens Foundation supported under NABARD RIDF, which brought a positive change in his life. Ridge to valley approach was adopted to detain, divert, store and use available rainwater.



Balram Oraon in his agricultural land

The pond was constructed after treatment of the land through TCB (trench cum bunding). TCB which is a newly evolved bunding type, where in the earthen embankments are constructed with a 5 mtr length x 1 mtr width x 0.6 mtr depth trenches & by leaving 0.6 mtr berm in between each trenches. More runoff water can be stored, there by more water infiltrates into the soil and provides moisture for more periods to the development of vegetation. After the construction of the pond, Balaram Oraon does farming throughout the year, in which he produces potatoes, onions, garlic, mustard, cauliflower, cabbage, pumpkin, spinach etc., which he sells in the market and also uses for household consumption. This is now his primary source of livelihood. He is also doing fish farming by seeding fish seeds of Rehu, Katla, due to which fisheries have also become a source of income and he is also planning for duck farming in future. He can increase his income by hatching eggs from duck farming. With all these sources of income, their economic condition has become much stronger than before. He is now able to pursue farming commercially. He is very grateful to Citizens Foundation for this valuable support in earning his livelihood. This has also brought a significant change in their lives socially.



Land treatment through TCB



Construction of pond used for irrigation to increase agriculture yield

IWMP-PMKSY

Integrated Watershed Management Programme (IWMP) by the Ministry of Rural Development, is another move to combat the problems of water scarcity for farmers. Our watershed management programme motive is to become a sustainable means of support for agriculture in the arid areas of Jharkhand. The main objectives of the IWMP are to preserve and conserve the ecology, restore and develop degraded natural resources by arresting soil loss, improving soil health, soil-moisture regime augmentation, promote water harvesting, recharging ground water, enhance crop production and promote livelihood and gainful employment opportunities. This programme aims to create surplus water storage capacities and motivate farmers to undertake unique water conservation techniques such as stormwater harvesting, to tackle the poor water holding capacity in the areas. The programme has influenced farmers to shift from the soil destroying mono-crop techniques to multi-crop farming techniques, enabling them to have sufficient food grains in times of need. Poverty alleviation and hunger elimination are the objectives this programme seeks to achieve, and it has gained success in increasing crop diversity and irrigation volumes. Currently, the programme has been initiated in 25 villages across 3 districts namely Gumla, Latehar and Sahebganj.



Vision Statement:

Project has been formulated with specific vision within the stipulated time frame of 5 years. Soil erosion will be checked from current rate of 13.5 tonnes/ha./yr. through Soil Conservation measures. Through implementation of Water Harvesting Structures (Ponds) the irrigated area will lead towards increase in crop productivity. The rainfed agriculture project area comes under kharif paddy stabilization through proper management of water and SRI techniques, where crop productivity will increase 2 times the present productivity (Paddy).

- ✓ Increase in irrigation command area will increase the 2 cropping areas through proper management of water resources.
- ✓ Increase in income level of landless farmers from base income through various alternative livelihood activities in project.
- ✓ Maximum percentage of population will attain food security after implementation of the project.
- ✓ Most of households of the project area will have access to safe and hygienic drinking water.
- ✓ The capacity building program will enhance enough awareness, to take decisions for development of villages after 4 years
- ✓ The overall vision of the project is to uplift of socio economic condition of the community through interventions of IWMP project.

IWMP Gumla

The Micro Watershed lies in the block of Bharno in Gumla, Jharkhand. The Watershed cluster consists of 6 micro watershed covering an area 5863.35 ha of 25 villages. The present DPR is all of 6 micro watershed coding consisting of 25 villages namely Amdari, Amliya Kalyanpur, Asro, Bantoli, Bharno, Burhipat, Cheto, Danrkesa, Dumardon, Ghaghra, Jamgain, Jatargari, Jhiko, Kairo, Kharka, Khukhra, Konkre, Malgo, Parsa, Raykera, Samsara, Singarsarai, Sukurhutu, Tilsiri, Turiamba of Bharno block of Gumla district, with total treated area of 4956.83 ha. The micro watershed covering 1383 H.H having the total population 7024 represents ST-74% SC-3% OBC-15% GEN-4%, MIN-4%, literacy rate of 62% and 860 BPL families. The land holding comprises of 32.25% marginal farmers, 43.38% small farmers, 9.40% medium farmers 5.78% big farmers and 9.18% of landless farmers with an average of 0.21 hectare of land. The land use pattern of micro watershed is, forest cover land 752.96 ha, rain fed agriculture land 8211.92 ha, irrigated land 401.55 ha, permanent pasture 51.59 ha, cultivable and non cultivable waste land 247.08 ha and 504.96 ha respectively. In Project villages more than 66% of the arable land is rain fed. The rain fed condition, absence of irrigation facilities, absence of dry land farming & vulnerable farming system is causing food insecurity among marginal farmers (32.25%) and small farmers (48.38%)



IWMP Latehar

The villages under watershed in Latehar district covering parts of Chandwa, Balumath and Latehar blocks located in interior areas of low agricultural productivity and high occurrence of scarcity. Small landholdings and low productivity of land is inadequate to sustain the villagers in their own place. Left dependent on rain-fed seasonal farming, majority of land remain uncultivated in rest of the year. Majority of farmers have no longer employment on land for more than half of the year which is forcing tribal families on the verge of poverty, compelling them to 'migrate' in search of employment. Under this situation, there is an imperative need to establish a system, ensuring rain water harvesting, conservation and recharge to surface and sub-surface reservoir and optimal development of ground water, facilitating the villagers to come out of such prolonged sufferings. It is for these reasons that implementation of a micro watershed project to ensure both surface and ground water potential and optimum utilization thereof and also accomplishment of various development activities based on the potentiality of the natural resources within the vicinity of village itself for overall welfare of the people, have been felt. The micro watershed is located in the Chandwa, Latehar and Balumath Block of Latehar District in Jharkhand. The total Geographical Area of the watershed is 6315.13 Ha. Out of total area 5822.04 Ha is proposed to be treated under this micro-watershed. The watershed cluster consists of 8 micro watersheds. It covers 28 villages. Distance of this watershed from the block headquarters is 15 kms and 25 kms from district headquarters at Latehar. It can be approached by all-weather roads. Watershed is approachable throughout the year.



JTELP (Jharkhand Tribal Empowerment and Livelihood Project)

In order to serve tribal population a little better and improve their living standards, Citizens Foundation is carrying out 'Jharkhand Tribal Empowerment and Livelihood Project' (JTELP) as FNGO in Borio block of Sahibganj district and Bhandra block of Lohardaga district of Jharkhand where more than 50% of rural population residing is tribal. This project is under International Fund for Agricultural Development supported by JTDS (Jharkhand tribal development society). The overall project goal is to improve the living conditions of tribal communities, especially primitive tribal groups (PTGs), across Jharkhand. Specifically, the project aims to empower and enable 142,000 tribal households, including 12,100 PTG households, to take up livelihood options based on sustainable and equitable use of natural resources. To that end, project activities involve community empowerment, integrated natural resource management and livelihoods support. The project also focuses upon community participation, awareness and mobilization to conserve and manage natural resources within the boundaries of Borio and Bhandra blocks of the state. Citizens Foundation operates this project through formation of self-help groups, concentrating more on women participation and generating additional sources of income through activities like poultry, dairy and handicrafts.



Techno Managerial Support

07

Citizens Foundation aims to contribute in the overall development of quality of living and strengthening of the system through technical support in all stages of growth, adaptation, sharing, and also supports training activities and solving problems. We provide consultancy on technical, social and CSR projects across various thematic areas. Citizens Foundation transfers skills and knowledge to people with user - friendly solutions. There are several conflicts associated with acquisition of land and subsequent resettlement & rehabilitation of project. Affected communities are significant congestion for infrastructure development. These obstructions not only delay the implementation of proposed investments but are also likely to propel a vicious cycle of low investment and low growth in the economy. In Bihar with the Support of Water Resource Department, Citizens Foundation has been providing Techno Managerial Support in preparing land acquisition and resettlement & rehabilitation plans. Under the organisation has been working in several projects such as :



01

Bihar State Road Development Corporation (BSRDCL) LA and R&R Project.

02

Flood Control Division, Bhagalpur, LA and R&R Project.

03

Flood Control and Drainage Division, Purnea, LA and R&R Project.

04

Drainage Division, Sitamarhi.

05

Flood Control Division, Katihar, LA and R&R Project.

06

Flood Control Division, Bounsi (Banka), LA and R&R Project.

07

Flood Control and Drainage Division, Kishanganj, LA and R&R Project.

Advocacy and Policy

Jharkhand State Bal Bhawan:



Jharkhand State Bal Bhawan (JSBB) is affiliated to National Bal Bhavan (NBB) (an autonomous institution set up under the Ministry of Human Resource Development (HRD), by Government of India). It was initiated in Jharkhand in the year 2009 to protect and foster the innate potential of children in the areas of creative performance, creative writing, creative scientific innovation and creative arts. Citizens Foundation was authorized to function as the State Nodal Agency for National Bal Bhavan to operate the JSBB to nurture and train children between 10 to 16 years of age. Jharkhand State Bal Bhawan provides a common platform and guidance from renowned artists and performers to young children and showcases their skills among its member children through seminars, workshops, exhibitions, art camps and competitions organized by JSBB at various levels (district & state levels).



For You :

"FOR YOU" is a humanitarian and social movement launched in 2015 by Citizens Foundation, based on the principles of "REDUCE, REUSE, RECYCLE, AND REALISE." It's more of a coordinated movement of responsibility and realisation towards underserved communities. We urge people to donate a variety of items among their fellow citizens by making them aware of their responsibilities and the sincere joy of giving while also contributing to the balancing act of our environment and people's smiles. 'FOR YOU' facilitates the collection of used/new reusable items such as clothing, books, medicines, and toys from other organisations, groups, institutions, and individuals, which are subsequently delivered to the poor and needy people who are deprived of such



basic needs and amenities and live in remote areas and urban slums. These small gestures mean a lot to the poor and disadvantaged. Having something to cover their bodies, cure some of their frequent health conditions, and let youngsters learn and play is sometimes enough to make young children and their parents smile. These insignificant things that become obsolete for one person might be the source of joy for others. Consider the smile you can bring to their faces before tossing anything you consider unnecessary, and remember the four R's: Reduce, Reuse, Recycle, and Recover.

08

Fighting COVID

Lessons from the pandemic

The COVID-19 pandemic, which was unprecedented globally, caused many difficulties and losses over the years 2021–2022, including losses to both lives and the economy. But it also served as a lesson and a reminder about the importance of local resources, a close-knit community, and freedom. Many lessons were redone, and persistence and perseverance were the keys to getting through the difficult times, whether it was the art of making the best use of resources, the power of an integrated approach to a challenge, or in saving, recycling, and helping others. Frontline workers who battled the pandemic against all odds were the strongest illustration of selflessness this year. Despite the passing of this year, its memories are still vivid in our hearts and minds.

Fighting COVID 19 in Health Facilities: Team CF efforts Kalyan Hospital Pathna

The second wave of the pandemic had an eye opening affect when the need of oxygen with health care facilities started crumbling under the weight of sudden increased in demand, while the common people ran door to door trying to arrange oxygen for their loved ones. This Experience has demonstrated the need of updated healthcare facilities to Stand Stong. Hence Citizens Foundation installed oxygen with support of Government of Jharkhand at Kalyan Hospital, Pathna block, Sahibganj district, Jharkhand. At present the hospital is equipped with 50 oxygen beds, 47 pipe lines connected in the wards, 2 pipelines in Isolation Ward and 1 in Operation Theatre. 24 D-type oxygen cylinders were also made available by Mr. Ramnivas, D.C Sahibganj so that people from that locality were ensured oxygen in emergencies.

CHC NONGKHLAW & ICHAMATI

To fight the ongoing battle against COVID-19 which is rapidly spreading its roots across the country with a death toll in Thousands, plenty of innovative preparations were done by the team of Citizens Foundation. This non-profit organization runs two 50 bedded community health centres in the state of Meghalaya : one in Nongkhlaw and the other in Ichamati, in association with the state government and it is not just the health facilities that have been amped up but also a variety of community outreach programmes that ensure that the people out there are well informed about the threat posed by COVID-19 and make sure that better practices are done when it comes to fighting with the pandemic.



09

Tie Ups and Empanelment

- ✓ Member of United Nations Global Compact Network India (UNGCI).
- ✓ Empanelled by Ministry of Drinking Water and Sanitation, Gol.
- ✓ Empanelled by Ministry of Urban Development (NULM), GoJ.
- ✓ Affiliated to National Bal Bhawan, an autonomous body of MHRD, Gol.
- ✓ Empanelled by NAEB, Ministry of Environment, Forests and Climate Change, Gol.
- ✓ Empanelled by IICA, Ministry of Corporate Affairs, Gol.
- ✓ Empanelled by Water Resources Department, Government of Bihar for Land Acquisition and Rehabilitation and Resettlement Plan (LA & R n R).
- ✓ Empanelled by the Department of Revenue, Registration and Land Reforms for conducting Social Impact Assessment (SIA).
- ✓ Corporate Member of ASSOCHAM.

Awards and Recognition

10



Financials

11

Balance Sheet (As on 31-Mar-2022)

PARTICULARS	AMOUNT	
Liabilities		
A. Capital Account		
General Fund (As per Schedule)	₹	1,71,64,173.35
Add: Excess of income over expenditure	₹	1,35,41,968.27
Total (A)	₹	3,07,06,141.62
B. Loans (Liability)		
Bank OD A/c	₹	11,73,598.75
Secured Loans	₹	5,59,365.43
Total (B)	₹	17,32,964.18
C. Current Liabilities		
Sundry Creditors (As per Schedule H)	₹	2,97,42,258.95
Outstanding Liabilities (As per Schedule I)	₹	1,58,80,388.13
Total (C)	₹	4,56,22,647.08
D. Other Liabilities (As per Schedule D)	₹	17,35,263.13
E. Fund from Programme (As per Schedule F)	₹	51,71,094.12
Grand Total (A+B+C+D+E)	₹	8,49,68,110.13
Assets		
A. Fixed Assets (As per Schedule A)	₹	51,96,936.03
B. Current Assets		
(i) Deposits (Asset) ((As per Schedule B)	₹	1,32,81,309.41
(ii) Loans & Advances (Asset) (As per Schedule C)	₹	23,97,155.48
(iii) Sundry Debtors (As per Schedule E)	₹	2,76,08,772.57
Total (i+ii+iii)	₹	4,32,87,237.46
(iv) TDS Receivable	₹	16,36,317.00
(v) Duties & Taxes	₹	3,90,321.00
Total (iv+v)	₹	20,26,638.00
(vi) Bank Accounts (As per Schedule G)	₹	3,44,52,956.64
(vii) Cash-in-hand	₹	4,342.00
Total (vi+vii)	₹	3,44,57,298.64
Total (B)	₹	7,97,71,174.10
Grand Total (A+B)	₹	8,49,68,110.13

Date: 07/09/2022
Place: Ranchi
UDIN: 22402994AREMAH3387

CITIZENS FOUNDATION
[Signature]
Secretary

For Mohindra & Associates
Chartered Accountants



[Signature]
(CA Rajeev Kamal Bittu)
M.No.-402994
FRN: 001406N

Income and Expenditure Account (For the Year Ending 31-Mar-2022)

PARTICULARS	AMOUNT
Expenses	
A. Activity Expenses	
To, Agricultural Technology Management Agency (ATMA)	₹ 1,97,016.00
To, BPCL Project-Bokaro	₹ 49,03,720.00
To, BSRDCL Programme Expenses (Bihar)	₹ 80,18,795.34
To, Community Health Centre Programme Expenses (Meghalaya)	₹ 2,23,68,437.00
To, Goatery Distribution Programme of JSLPS Expenses	₹ 2,65,187.00
To, Holistic Rural Development Programme Expenses (HRDP)	₹ 61,06,283.99
To, Integrated Tribal Development Agency Expenses	₹ 22,955.00
To, Integrated Watershed Mgt. Prog. Expenses (IWMP) Gumla	₹ 1,65,17,583.58
To, Integrated Watershed Mgt. Prog. Expenses (IWMP) Latehar	₹ 1,32,10,706.00
To, Jharkhand Tribal Development Society Exp. (Bhandra)	₹ 22,64,458.00
To, Jharkhand Tribal Development Society Exp. (Shahibgunj)	₹ 27,71,015.00
To, JTDS CCD Programme Exp.	₹ 97,15,845.85
To, Meso Hospital Programme Expenses (Chaibasa)	₹ 22,72,739.89
To, Meso Hospital Programme Expenses (Pathna)	₹ 1,57,61,366.20
To, Mobile Medical Unit Programme Expenses (MMU)	₹ 1,60,57,655.74
To, National Thermal Power Corporation Limited Exp. (MMU)	₹ 35,92,234.02
To, Primary Health Centre Programme Expenses (PHC)	₹ 1,57,95,768.22
To, Railway Children Programme Expenses	₹ 23,666.00
To, Vedanta CSR Programme Expenses	₹ 51,83,995.20
To, Direct Expenses for SOULS	₹ 1,06,40,815.00
To, Indirect Expenses for SOULS	₹ 41,86,255.95
To, Direct Expenses for HRDP	₹ 1,66,92,855.00
To, Indirect Expenses for HRDP	₹ 53,45,737.09
To, Indirect Expenses for HRDP-SRP	₹ 217.40
To, Miscellaneous Expenses-Head Office	₹ 1,800.00
To, Organising Covid Vaccination Camp in Village-ESL	₹ 5,62,294.12
To, Salary Programme Agri-Clinic Madhupur	₹ 6,77,097.00
To, Training Expenses	₹ 57,850.00
To, Travelling & Conveyance Expenses-Jamshedpur	₹ 9,529.00
Total (A)	₹ 18,32,23,878.59
B. Establishment Expenses	
To, Mega Health Camp (Rites Ltd.)	₹ 15,121.28
To, Mobile/Telephone/Internet Expenses	₹ 1,29,024.69
To, Office Maintenance	₹ 1,32,814.00
To, Office Rent (HO)	₹ 1,80,000.00
To, Project's Proposal & Tender Expenses	₹ 79,449.14
To, Sacrectary Membership Fee	₹ 5,000.00
To, Salary Head Office	₹ 70,97,052.43
To, Tender/Bidding	₹ 8,054.00
To, Vehicle & Generator Fuel Expenses	₹ 16,771.00
To, Vehicle Repairing/Insurance/Registration Expenses	₹ 4,81,084.75
To, Advertisement Development Charges	₹ 4,54,738.00
To, Babita Gupta-Guest House Rent	₹ 85,071.00
To, Bank & Commission Charges	₹ 3,45,566.70
To, Bank Interest of Term Loan (UBI)	₹ 65,928.00
To, Bank Interest on CC	₹ 3,08,481.00

To, Computer Exps.	₹	2,42,411.71
To, Depreciation on Fixed Assets	₹	7,71,127.54
To, Electricity & Telephone Expenses of HO	₹	79,889.50
To, ESIC Contribution (HO)	₹	4,52,872.00
To, Head Office Refreshment Expenses	₹	83,896.00
To, Insurance of Bike-JH01R-1431	₹	1,040.00
To, Legal Exps/Fees	₹	48,356.53
To, News Paper and Magazine Exps.	₹	36,481.00
To, Office Expenses (HO)	₹	3,11,069.62
To, Postage, Telegram & Courier Exps.	₹	1,31,091.00
To, Printing & Stationery Exps. (HO)	₹	8,56,289.83
To, Professional/Consultancy Fee	₹	13,51,915.15
To, Staff Welfare Expenses	₹	12,902.00
To, Subhadeep Gupta (Land Lord Ras Bihari 301)	₹	1,69,140.00
To, Sundry Adjustment	₹	114.50
To, Travelling & Conveyance Exps.	₹	2,03,872.00
Total (B)	₹	1,41,56,624.37
C. To, Excess of income over expenditure	₹	1,35,41,968.27
GrandTotal (A+B+C)	₹	21,09,22,471.23
Incomes		
A. Direct Incomes		
By, Project's Bills/Invoice (As per Schedule "J)	₹	20,03,89,998.38
By, Vol. Contribution, Mem. Fee & Donation	₹	35,22,000.00
By, Shared Supervision Cost From HRDP Project	₹	16,68,350.88
By, Shared Supervision Cost From Soul-Sikkim Project	₹	21,62,920.70
By, Shared Supervision Cost-Ichamati	₹	12,56,315.14
By, Shared Supervision Cost-Nongkhilaw	₹	13,37,786.75
Total (A)	₹	21,03,37,371.85
B. Indirect Incomes		
By, Bank Interest Received	₹	5,84,992.22
By, Discount Received	₹	106.00
By, Round Off	₹	1.16
Total (B)	₹	5,85,099.38
Grand Total (A+B)	₹	21,09,22,471.23

Date: 07/09/2022
Place: Ranchi
UDIN: 22402994AREMAH3387

CITIZENS FOUNDATION
[Signature]
Secretary

For Mohindra & Associates
Chartered Accountants



[Signature]
(CA Rajeev Kamal Bittu)
M.No.-402994
FRN: 001406N

Income and Expenditure Account (For the Year Ending 31-Mar-2022)

PARTICULARS	AMOUNT
Receipts	
A. Opening Balance	
To, Bank Accounts	₹ 3,15,05,060.71
To, Cash-in-hand	₹ 1,120.00
Total (A)	₹ 3,15,06,180.71
B. Current Assets	
To, Fund Received From Programme	₹ 18,29,33,107.72
Total (B)	₹ 18,29,33,107.72
C. Direct Incomes	
To, Vol Contribution, Mem Fee & Donation	₹ 35,22,000.00
Total (C)	₹ 35,22,000.00
D. Other Receipts	
To, Bank Interest Received	₹ 5,84,992.22
Total (D)	₹ 5,84,992.22
E. Closing Balance	
To, Bank OD A/c	₹ 11,73,598.75
Total (E)	₹ 11,73,598.75
Grand Total (A+B+C+D+E)	₹ 21,97,19,879.40
Payments	
A. Opening Balance	
By, Bank OD A/c	₹ 58,81,158.72
Total (B)	₹ 58,81,158.72
B. Loans (Liability)	
By, Secured Loans	₹ 6,89,645.00
Total (B)	₹ 6,89,645.00
C. Current Liabilities	
By, Duties & Taxes	₹ 19,90,402.00
By, Sundry Creditors	₹ 4,05,85,111.30
By, Outstanding Liabilities	₹ 4,42,15,291.93
Total (C)	₹ 8,67,90,805.23
D. Current Assets	
By, TDS Receivable	₹ 1,13,710.00
By, Deposits (Asset)	₹ 7,91,800.00
By, Loans & Advances (Asset)	₹ 3,91,59,837.38
Total (D)	₹ 4,00,65,347.38
E. Branch / Divisions	
By, Soul Sikkim (HDFC Bank Ltd.)	₹ 26,33,493.20
By, School Refurbishment Programme (HDFC Bank Ltd)	₹ 20,000.00
By, Refund to HDFC Bank	₹ 90,408.52
Total (E)	₹ 27,43,901.72

F. Direct Expenses		
By, Agricultural Technology Management Agency (ATMA)	₹	9,016.00
By, BPCL Project-Bokaro	₹	99,000.00
By, BSRDCL Programme Expenses (Bihar)	₹	1,23,004.00
By, Community Health Centre Programme Expenses (Meghalaya)	₹	48,688.00
By, Holistic Rural Development Programme Expenses (HRDP)	₹	1,47,092.00
By, Integrated Watershed Mgt. Prog. Expenses (IWMP)Gumla	₹	5,63,682.00
By, Integrated Watershed Mgt. Prog. Expenses (IWMP) Latehar	₹	7,73,405.00
By, Jharkhand Tribal Development Society Exp. (Bhandra)	₹	1,59,430.00
By, Jharkhand Tribal Development Society Exp.(Shahibgunj)	₹	27,17,196.00
By, JTDS CCD Programme Exp.	₹	8,64,088.00
By, Meso Hospital Programme Expenses (Chaibasa)	₹	18,31,039.00
By, Meso Hospital Programme Expenses (Pathna)	₹	44,86,540.00
By, Mobile Medical Unit Programme Expenses (MMU)	₹	1,48,713.00
By, National Thermal Power Corporation Limited Exp. (MMU)	₹	4,94,621.00
By, Direct Expenses for HRDP	₹	1,66,92,855.00
By, Indirect Expenses for HRDP	₹	36,76,451.59
By, Shared Supervision Expenses for HRDP	₹	16,69,285.50
By, Direct Expenses for SOULS	₹	1,02,15,334.16
By, Indirect Expenses for SOULS	₹	21,30,274.45
By, Shared Supervision Expenses for SOULS	₹	10,10,617.05
Total (F)	₹	4,78,60,331.75
G. Indirect Expenses		
By, Babita Gupta	₹	85,071.00
By, Bank & Commission Charges	₹	3,45,566.88
By, Bank Interest on CC	₹	3,08,481.00
By, Legal Exps I Fees	₹	30,388.81
By, Office Expenses (HO)	₹	3,830.00
By, Printing & Stationery Exps. (HO)	₹	40.00
By, Staff Welfare Expenses	₹	11,452.00
By, Subhadeep Gupta (Land Lord Ras Bihari 301)	₹	1,69,140.00
By, Travelling & Conveyance Exps.	₹	6,646.00
By, Office Rent (HO)	₹	1,80,000.00
By, Project's Proposal & Tender Expenses	₹	72,500.00
By, Sacrectary Membership Fee	₹	5,000.00
By, TENDER 1 BIDDING	₹	8,054.00
By, Vehicle & Generator Fuel Expenses	₹	5,100.00
By, Vehicle Repairing/Insurance/Registration Expenses	₹	120.00
By, Round Off	₹	1.27
Total (G)	₹	12,31,389.69
H. Closing Balance		
By, Bank Accounts	₹	3,44,52,956.64
By, Cash-in-hand	₹	4,342.00
Total (H)	₹	3,44,57,298.64
Grand Total (A+B+C+D+E+F+G+H)	₹	21,97,19,879.40

Date: 07/09/2022
Place: Ranchi
UDIN: 22402994AREMAH3387

CITIZENS FOUNDATION
[Signature]
Secretary

For Mohindra & Associates
Chartered Accountants



(CA Rajeev Kamal Bittu)
M.No.-402994
FRN: 001406N

Our Partners

Government



UN Agencies



National & International



Network & Associates



Corporates



PSU's



Media



Educational Institutes





Scan to view
Digital copy



REACH US AT

Registered Office

Citizens Foundation

7, Betar Kendra, Niwaranpur, Ranchi-834001, Jharkhand

Ph. No.: 0651-2481777, 2482777

Email: mail@citizensfoundation.org | Website: www.citizensfoundation.org

State Offices

MEGHALAYA

Citizens Foundation

1st floor, Field Side, Lawijynriew
Beside Nepali School, Shillong-793 014

BIHAR

Citizens Foundation

H.No 1, Kidwaipuri, PS Buddha Colony
Patna- 800 001, Bihar

ASSAM

Citizens Foundation

House No: 13, 1st Floor, Chachal VIP Road,
Opposite H.P. Petrol Pump
Guwahati-781 022

SIKKIM

Citizens Foundation

NavGaon, Near SDM office Road
Pakyong, East Sikkim
Sikkim-737 106